



Rocky Mountain Federation News

Presidents Message: By Beth Simmons, Ph.D.



Officers

President: Beth Simmons, Ph.D. president@rmfms.org

Vice President: Liz Thomas Vice-pres@rmfms.org

Secretary: Wayne Cox secretary@rmfms.org

Treasurer: Gene Maggard treas@rmfms.org

Historian: Cinda Kunkler historian@rmfms.org

\*Two immediate Past Presidents serve on Executive Committee!\*

Richard Jaeger 2016 Past-pres-1@rmfms.org

Diane C. Wier 2015 Past-pres-2@rmfms.org

"A smile is a curve that sets everything straight." ... Phyllis Diller

Editor: Jim McGarvey editor@rmfms.org

How're your T.E.A.M.S.?

TEAMS!!! How did your TEAM do this month? Did you TEACH? What did you teach? To whom? Did you ENCOURAGE? Who did you encourage to accomplish a new goal? Did you ACCOMMODATE someone this month and how? Did you MENTOR someone? Towards what end? And did you SUPPORT someone?

The RMFMS clubs get an A+ in the support department! Hundreds of members and clubs wrote letters to the BLM officers to revise and reconsider the paleontological collecting rules. And then President Trump stopped it from happening by placing a moratorium on all pending regulations! So get out there and collect those fossils.

So let's sweeten the message - it's Valentine's Day time. "S" could stand for "Sweetheart"! Who is your club "Sweetheart"? Who is that one person who is always available when needed? Who always has a kind word to say about everything and everyone? Who always wears a smile as part of the club uniform? Who always encourages the young people? The new members? Honor your "sweetheart" by nominating him/her as your ACROY - All-American Club Rock hound of the Year.

Have you turned in your forms for the Albuquerque meeting? Sent in your proxies, if none of your members can attend? It's time... NOW.

This is the last newsletter before the Albuquerque meeting. So we'll see you there. We'll put off the March newsletter until after the meeting, so we can include all the news and photos of the event.

See you in Albuquerque! Beth Simmons RMFMS 2017 President



**PROPOSAL for RMFMS for Denver Gem and Mineral Guild (and other Colorado clubs) to host the**

2018 RMFMS Convention and Meeting

“Rocky Mountain Rock Rendezvous”

**June 8, 9, 10, 2018 in Fairplay, Colorado**

In conjunction with the Fairplay Contin-tail event

The concept of this convention/meeting is quite different from the “normal” RMFMS meetings which traditionally have been in conjunction with an “indoor” show, with few or no field trips offered. Just boring meetings and awards breakfasts and banquets.

We plan to rent the ballroom of the Riverside Inn Hotel from Friday late afternoon through Saturday evening. The executive committee of the RMFMS could meet there Friday evening whilst any competitive exhibitors would be setting up their exhibits along the walls of the room in their own showcases. There would be no non-competitive exhibits. On Saturday morning the hotel would cater the Editors’ breakfast buffet, in conjunction with their breakfast room. After the Editors’ Breakfast, folks could walk over to the show along a paved pathway across the Middle Fork of the South Platte river. The RMFMS annual meeting would be held at 2:00 in the afternoon. Then the annual Awards banquet would be on Saturday night. Recently, the RMFMS meetings have been running about 40-50 members; I would hope for more because of the other clubs’ involvement.

Saturday night’s awards banquet would have to be catered. The hotel offers catering; perhaps it would be a BBQ. Awards would be announced for any competitive exhibits (there have been less than 10 at recent RMFMS shows!) After the dinner, with perhaps an entertaining speaker like Joe Dorris, the exhibits would be removed.

On Sunday, each local club would lead one field trip to a local site. Each trip would have a maximum of 25 persons, and reservations would be made in advance. The Salida club might take visitors to the Calumet mine, Canon City will take visitors to the barite claim, another might take folks to Joe Dorris’s Topaz Mine, DGMG lead a jaunt over Hoosier Pass through Breckenridge to the Beta Quartz site, and perhaps the Lake George club would take visitors to one of the amazonite/smoky quartz claims. The local historical society could sponsor a road trip to Kite Lake which goes past the Paris Mill.

DGMG has a reputation for throwing good parties; this would be no exception. Expenses would include rent of the ballroom, which would be included in the price of the breakfast and the dinner meals, paid for by the participants. The only other anticipated costs would be the making of favors using Colorado minerals, of course, which the other clubs have offered. RMFMS no longer participates financially in the show proceeds, thus Greg Tunnicliff, who runs the show, has agreed with this plan. Most of the present officers of the RMFMS agree that changes need to be made in the meeting format, and this would be a welcome reprieve.

The modern Riverside Inn is large enough to handle many overnight participants; families who want to camp for the weekend will find plenty of well-equipped campgrounds around Fairplay. Other local attractions include South Platte City, the rebuilt ghost town in Fairplay.

This proposal must be ready for approval by the delegates at the meeting in Albuquerque in March. The DGMG Board voted to support the idea, and the other clubs are stepping forward with ideas and materials for favors. So we hope the RMFMS Executive Committee will go along with our “Rocky Mountain Rock Rendezvous”!

RMFMS President 2017

RMFMS BEAC

DGMG Immediate Past President and Editor

Beth Simmons, Ph.D.

## **AN INVITATION TO EXHIBIT IN THIS YEAR'S NATIONAL SHOW!**

By Jim Brace-Thompson, 2017 CFMS-AFMS Show Publicity Chair

On behalf of the Ventura Gem & Mineral Society, I invite you to exhibit in this year's national AFMS Show & Convention taking place June 9-11 in Ventura, California. Enter either a competitive or a noncompetitive display—or one of each! Go to the show website at <http://2017CFMS-AFMSShow.com> to access and download entry forms by clicking on “Files and Entry Forms.” You'll also find a direct link to the AFMS Uniform Rules manual. The deadlines are May 22 for noncompetitive entry forms and April 30 for competitive forms, so don't delay.

Exhibiting is fun! When displaying at a gem show, we not only get to show off our collections and handiwork but also to learn from others, seeing display techniques, getting advice, sharing tips, and forging bonds of friendship through mutual interests. There is a host of trophies for adult exhibitors, including a special trophy for nervous first-time Novice Exhibitors sponsored by the hosting Ventura society. Kids entering either competitive or noncompetitive displays can earn the Showmanship badge in our AFMS/FRA Badge Program, and those entering competition can strive for both trophies and the AFMS Lillian Turner Award. Several years ago, Lillian Turner of Bethesda, Maryland, generously donated funds to support an award for the best junior's exhibit at the annual AFMS Show. The award consists of a certificate, a \$100 bond, and a mineral specimen and is presented at the Show Awards Ceremony. I guarantee that adults and kids who choose to display in Ventura will find the experience both rewarding and fun!

\*\*\*\*\*

### **Rockhound Soap Box**

**AFMS Legislation and Conservation Committee**

**John Martin**

[afmsclc@antelecom.net](mailto:afmsclc@antelecom.net)

National Monuments have been on the minds of many amateur collectors of rocks and minerals for personal and educational uses. When National Monuments are created whether by legislation or by Presidential Edict, removal of any Biological, Geological, Archeological, Paleontological and Historical items becomes a Federal Felony. There are of course exceptions as has been seen in California in the Mojave Trails National Monument where intervention, by oversight, from Senator Feinstein, Recreational Rockhounding has been given a temporary exception until the formal Monument Management Plan is finalized. Future National Monuments will not allow Recreational Rockhounding unless the Monument Management Plans expressly allow for this activity. The only way Recreational Rockhounding will be allowed is if there is a united effort by all Amateur Rock and Mineral Collectors to make their voices and actions recognized by the government land managers, legislative bodies and executive office responsible for the creation of the monuments. The list below is a proposal of new National Monuments, some are going through the legislative process but most are being proposed to be created by Executive Orders. As can be read below not all proposed National monuments are only in the west. Several are proposed in the mid west and eastern United States. Will the creation of these monuments have an adverse effect on our Recreational Rockhounding? If there are any collecting areas with in the proposed National Monuments, the answer is a definite YES and only you, the Recreational Rockhound, can influence this political action. The future of Rockhounding is in your hands, so you must get involved in the process to save your hobby for present and future generations of Rockhounds.

**Maine Woods. Maine** The Maine Woods is the largest expanse of intact forest east of the Rocky Mountains.

**Rocky Mountain Front. Montana** The Rocky Mountain Front is south of Glacier National Park and west of Great Falls, Montana.

**Boulder-White Clouds. Idaho.** The Boulder and White Cloud Mountains of Idaho rise just north of Sun Valley and Ketchum.

**Owyhee Canyonlands. Oregon** The Owyhee Canyonlands have been proposed as national park or monument in the past.

**Cascade Siskiyou Expansion. Oregon** The current 62,000 acre Cascade Siskiyou National Monument (CSNM) was created by President Bill Clinton in 2000. It was one of his leaving office, national monument presents to the American people, and now many feel the borders should be expanded.

**Sonoran Desert additions. Arizona** There two proposed National Conservation Areas (NCA) proposed for the Sonoran Desert west of Phoenix—the **Belmont Harquahala NCA** and the **Gila Bend NCA**.

**Vermillion Basin, Colorado.** The Vermillion Basin, located in northwest Colorado, is sometimes billed as Colorado's loneliest corner.

**Valles Caldera, New Mexico** The 89,000-acre Valles Caldera northwest of Santa Fe, New Mexico is one of the largest calderas in the world and is an excellent example of a caldera advanced in history but still retaining its essential structures.

**Greater Hart-Sheldon, Nevada and Oregon** The Greater Hart-Sheldon Wildlands is a vast, remote land of scenic sagebrush-dominated landscapes.

**Siskiyou Wild Rivers, Oregon** The Siskiyou Wild Rivers area is located in the southwest corner of Oregon and northwest California. In total more than a million acres of Forest Service and BLM lands encompass one of the highest concentrations of free-flowing rivers left in the US.

**Gold Butte, Nevada** Gold Butte is the name of a large area of desertlands managed by the BLM that lies east of Las Vegas between the Grand Canyon/Parashant National Monument, Arizona, and Lake Mead National Recreation Area, just south of the City of Mesquite.

**Hidden Gems, Colorado** The Hidden Gems are proposed wilderness areas primarily on the White River National Forest in Colorado. Legislation has been introduced by Senator Mark Udall and is companion legislation to a bill submitted by Congressman Jared Polis.

**Browns Canyon, Colorado** Browns Canyon on the Arkansas River near Salida and Buena Vista Colorado is a popular area for whitewater rafting and kayaking.

**Big Bend Marine Reserve, Florida** The Big Bend of Florida's Gulf Coast is one of the most pristine and least developed in the state. Stretching from Florida's panhandle, it includes the area around Apalachee Bay, an arm of the Gulf of Mexico.

**Greater Canyonlands Utah** is the heart of some of Utah's canyon country's wildest corners. The original proposal for Canyonlands National Park was far greater than the acreage that finally was designated but there is still an opportunity to correct this deficiency. Counting 1.8 million acres of surrounding unroaded BLM lands adjacent to it, Greater Canyonlands remains one of the largest roadless areas left in the lower 48 states.

The **Bears Ears** are a pair of buttes located in San Juan County in the southeastern Utah. The Bears Ears are bordered on the west by Dark Canyon Wilderness and Beef Basin, on the east by Comb Ridge and on the north by Indian Creek and Canyonlands National Park. Rising 2,000 feet (610 m) above Cedar Mesa to the south, the Bears Ears reach 8,700 feet (2,700 m) in elevation and are named for their resemblance to the ears of a bear emerging from the horizon.

The **Bodie Hills** are a low mountain range in [Mono County, California](#), is where the mining district and town of Bodie, California is located. The Hills are between [Bridgeport](#) and the [Nevada](#) border, where they become the [Bodie Mountains](#) in [Mineral County, Nevada](#). The [Sierra Nevada \(U.S.\)](#) Range towers to the west.

One last note, The President just created the largest National Monument in the history of the United States in the state of Hawaii. The monument is larger than Washington, Oregon, California, Utah, Nevada and Arizona combined. Though it is a marine monument and traditional Rockhound as we know it, is not a real problem for the average American Recreational Rockhound, it still remains that no collecting of any kind from inside its boundaries. This monument will have current and future impact on the lives of the residents and visitors of the state of Hawaii.

**“Happy Rockhounding and Enjoy Your Public Lands”**

\*\*\*\*\*

## **Rockhound Soap Box**

### **Rockhounding on Public Lands**

AFMS Conservation and Legislation Committee

John Martin

December 2016

[afmsclc@antelecom.net](mailto:afmsclc@antelecom.net)

Recreational Rockhounding is defined as the Non-Commercial collecting of Rocks, Minerals and Fossils, according to established laws, rules and regulations, for personal and educational use, see:

Part **8365 of Title 43 CFR** [Code of Federal Regulations], which provides for the collecting of “reasonable quantities” of rocks, minerals, semiprecious gemstones, and invertebrate and plant fossils of non-scientific importance, for personal use.

### **Legal Definition of Recreational Rockhounding as defined in Title 43 CFR.....**

§ 8365.1-5 Property and resources.

(a) On all [public lands](#), unless otherwise authorized, **no person shall**;

(1) Willfully deface, disturb, remove or destroy any personal property, or structures, or any scientific, cultural, archaeological or historic resource, natural object or area;

(2) Willfully deface, remove or destroy plants or their parts, soil, rocks or minerals, or cave resources, except as [permitted](#) under paragraph (b) or (c) of this paragraph; or

(3) Use on the [public lands](#) explosive, motorized or mechanical devices, except metal detectors, to aid in the collection of specimens [permitted](#) under paragraph (b) or (c) of this paragraph.

**(b)** Except on [developed recreation sites and areas](#), or where otherwise prohibited and posted, **it is permissible to collect from the [public lands](#) reasonable amounts of the following for noncommercial purposes:**

(1) Commonly available renewable resources such as flowers, berries, nuts, seeds, cones and leaves;

- (2) **Nonrenewable resources such as rock and mineral specimens, common invertebrate and common plant fossils, and semiprecious gemstones;**
- (3) **Petrified wood as provided under subpart 3622 of this title;**
- (4) **Mineral materials as provided under subpart 3604;** and
- (5) Forest products for use in [campfires](#) on the [public lands](#). Other collection of forest products shall be in accordance with the provisions of Group 5500 of this title.

(c) The collection of renewable or nonrenewable resources from the [public lands for sale or barter to commercial dealers may be done only after obtaining a contract or permit from an authorized officer](#) in accordance with part 3600 or 5400 of this chapter.

[[48 FR 36384](#), Aug. 10, 1983; [67 FR 68778](#), Nov. 13, 2002; [75 FR 27455](#), May 17, 2010]

Source: <https://www.law.cornell.edu/cfr/text/43/8365.1-5>

More on Code of Federal Regulations can be found at <http://www.amlands.org/6652/index.html> near bottom of page under **United States Code - Code of Federal Regulations (CFR)**

**“Happy Rockhounding and Enjoy Your Public Lands”**

\*\*\*\*\*

**Club Rockhound of the Year Award**



**Cañon City Geology Club  
Cañon City, Colorado**



The **Cañon City Geology Club** congratulates **Jennifer Gerring** as their 2016 AFMS Club Rockhound of the Year. Jennifer is the current president and has been a member for four years. She enthusiastically volunteers anywhere needed to help CCGC be an educational and successful organization. Such duties include secretary, membership, programs, club claim, and field trips. She created and maintains an award winning website, winning awards with the RMFMS and the AFMS. During her leadership, the club membership has grown from 60 members to over 300, and has seen the addition of a Pebble Pups program. She is a great ambassador for the club and CCGC wants to thank her for her hard work and dedication.

Sent in by Cathey Young, CCGC VP and the CCGC Board of Directors

## **2017 RMFMS Honorary Scholarship Award Recipients**

Dr. Chloë Bonamici of the New Mexico Institute of Mining and Technology, Department of Earth and Environmental Science, Socorro NM was selected to determine the recipients of the Rocky Mountain Federation of Mineralogical Societies, Inc. Scholarship Awards

Dr. Chloë Bonamici is a native of Flagstaff, Arizona, where she grew up backpacking in the Grand Canyon and learning to love rocks and minerals. She got her B.S. and M.S. in Geology from Northern Arizona University. She went on to the University of Wisconsin and earned her Ph.D. in Geochemistry in 2013. Following graduation, she worked as a postdoctoral researcher at Los Alamos National Lab, where she used her geochemical and mineralogical training to better understand the formation of trinitite (atomic glass). Chloë joined New Mexico Tech as an assistant professor in 2015. She teaches petrology, geochemistry, and field geology to both undergraduate and graduate students. Her research covers a variety of hard-rock topics and involves lots of field work and microscopy. In the lab, she performs fine-scale chemical analysis of minerals, which are small time-capsules of events in geologic history.

### **Graduate Student Awardees:**

**Ke Li** is a first-year M.S. student studying changes in mineralogy along the Great Unconformity as a result of fluids. She finished her B.S. in Geology at New Mexico Tech last year, where she did an undergraduate thesis on fluids in skarn minerals. Ke is considering a career in petroleum resources.

**Adam Smith** is a second-year M.S. student (and native of Albuquerque) studying the mineralogy and chemistry of a very unusual type of rock called carbonatite, which contains high levels of economically valuable rare earth elements. Adam hopes to go on to a career in economic geology and mining resource development when he graduates.

Our Congratulations to these two Students!

\*\*\*\*\*

### **AFMS Scholarship Foundation:**

Five Rocky Mountain Federation clubs have donated a total of \$717 to the AFMS Scholarship Foundation during the first two months of the 2016-2017 fiscal year. The donations received are as follows:

Shawnee Gem & Mineral Club - \$200.00

Stillwater Mineral and Gem Society - \$50 as a memorial to Evelyn Copley.

Tulsa Rock and Mineral Society - \$267.00

White Mountain Gem & Mineral Club - \$100 as a memorial to Ruth King.

Wichita Gem & Mineral Society – a donation of \$100 given by Gene & Peggy Maggard as a memorial to Kim Kristalyn and credited to the Wichita club.

I wish to thank all of above for their contributions to the AFMS Scholarship Foundation. I hope that a number of your clubs will make donations during our 2016/2017 fiscal year. Remember that \$48,000 in scholarships is provided each year to graduate students in the GeoSciences through our Foundation. This will included two \$4000 scholarships given to students at an institution in our Rocky Mountain Federation. The total amount of scholarships given out since the inception of the Foundation is now over \$1.75 million.

Richard Jaeger

RMFMS Scholarship Committee Chairman

## JUDGMENT DAY 2017

By Beth Simmons, RMFMS BEAC

The editors submitted their entries via the new [editor\\_contest@rmfms.org](mailto:editor_contest@rmfms.org) dropbox, which made life on this end MUCH easier! The entries were organized into proper categories, but some changed category. There were enough in the Adult Articles and Junior 12-17 categories that I divided them into the subcategories shown on the score sheet – informational, science, club activities, collecting localities, and humor (that gave many more authors a chance at the trophy!).

Then on Saturday January 28<sup>th</sup>, the judges convened at the Discovery Center at Dinosaur Ridge and began the arduous task of judging the many entries. You will receive your awards at Albuquerque and the results will be posted in the newsletter following the Editors' Breakfast. With pictures of the happy winners!

\*\*\*\*\*

### AFMS ENDOWMENT FUND

DeLane Cox and I are the Rocky Mountain Federation Regional Chairs for the AFMS Endowment Fund. Cheryl Neary, a member of the Eastern Federation, is the AFMS Endowment Fund Chair.

Basically, this is a raffle drawing with tickets being sold at \$5 each or five tickets for \$20.

People from around the American Federation donate prizes for the raffle – they may be jewelry, crystal, mineral, fossils, books, or other items, the value of which range generally from \$75 to \$200. The drawing will be handled so that there is at least one winner from each of the seven regional federations; last year we had I believe five winners from the Rocky Mountain Federation.

Several donations have been made so far and can be viewed on the American Federation Web site <amfed.org>. When you go to that site, click on 'Home', then on 'Endowment Fund' on the left side, then on '2017' on the left side. You will see that some truly beautiful items have been donated and there will be more to come; generally there are about 30 or more items.

This is a major way to financially support the American Federation's efforts on behalf of our hobby. Over \$5,000 was raised last year. Cheryl requests that the checks be sent to the regional chairs so that we may issue tickets and have a record of who has entered. Checks should be made payable to the "AFMS Endowment Fund". We then forward those checks to Pat LaRue, the AFMS Treasurer. DeLane and I will fill out the proper number of tickets for each contribution, send the stubs to the donating individual, and get the tickets to the AFMS Show in Venture, California in June to be put into the RMFMS bag. We will also the Endowment Fund Raffle tickets for sale at the RMFMS Show in Albuquerque this March. There will be at least one general prize ticket, maybe two or three, drawn from each of the bags for the seven regional federations. After that, all tickets will be dumped into one bag, and further drawings will take place until all the prizes have been awarded.

I hope that many of you will participate and hopefully be winners in California; you need not be present to win. I would also be happy to accept any donated prizes for the raffle;

the more prizes, the more winners, and hopefully, more money raised. I have donated a framed fossil fish and insect specimen myself. Our contact information is provided below. Please share this information with your club members and thanks for you consideration.

Richard D. Jaeger  
3515 E. 88<sup>th</sup> St.  
Tulsa, OK 74137-2602  
918-481-0249  
[RjgrSci@aol.com](mailto:RjgrSci@aol.com)

DeLane Cox  
8152 Spanker Ridge Dr.  
Bentonville, AR 72712  
479-254-0894  
<Delanec3@earthlink.com>



## All American Club Contest

Hey, Fellow Rockhounds. Is your club doing anything this year? Did you have a Show? Or any field trips? Displays in other places? Great guest speakers?

One of the nice things about going to the American Federation meeting is talking to people from other clubs across the nation and seeing what all they are doing. And there are some very active clubs out there!

Is your club aware of the All American Club Contest? This is all about what your club is doing, how it is doing it, and what the results are. In other words, it is a record of what your club has done for the year.

The All American Club contest has a judging sheet that is pretty easy to follow. It gives some suggestions about how to put together a scrapbook of the events for the year that can be submitted to the contest. Not hard. Simple. Fun job. The Judging Form for 2015 can be found at the AmFed.org website under Forms (<http://www.amfed.org/AACA.htm>) .....All American Club Contest. It is full of information about what is needed for the scrap book.

But, somebody has to DO it! And submit it for judging.

Right now, every club president should be reading this and thinking of how your club can get into this contest. You are doing things, so why not brag a bit. Get a member to do this. Download the AFMS score sheet and put together that scrapbook of your adventures this year.

Then, mail it to me by **February 15** so it can be judged for the Rocky Mountain Federation convention in Albuquerque in May. Top three winners will be forwarded on to the American Federation judges for the AFMS show in California in June.

OK, . . .time is short. But your club has done the things. And I'll bet someone has been taking pictures, too. Get that scrapbook put together. And, when you get it back, remember to keep it in your club library for everyone to see. It is your historical record for years to come. Might as well win a prize for it, too.

Send the completed scrap book to DeLane Cox, 8152 Spanker Ridge Drive, Bentonville, AR 72712. I will take good care of it, and judge it well.

\*\*\*\*\*

## RMFMS PLAC NM/wTX report Jan,2017

In December of 2016 there was not much activity in the way of Forest Plan Revision meetings or other comment or collaboration venues. Most parties decided it was time for a rest after a hectic year.

January 2017 started off with a meeting of the Mount Taylor Ranger District Collaborative Landscape Team, part of a new direction in Forest Plan Revision and future collaborative forest management being undertaken by the Cibola National Forest. The Cibola Forest is trying a new approach to forest management where they take a 'seat at the table' and all organizations with interests in public land policy form collaborative discussion groups to work out conflicts on use and access issues between individual parties, instead of the Forest Service serving as a centralized top-down management agency tasked with both developing a plan and then having to continually modify it as dozens of forest user groups attempt to make the Forest Plan more user-friendly to their purposes. Rockhounds were well represented at this meeting, with the current President of the Albuquerque Gem & Mineral Club, Bob Regner, in attendance to present the club's Position Statement. Several

other AGMC club members attended along with representatives of the Zuni Mountain Miners, the Uranium Producers of New Mexico, myself, and a few other individuals. In all 8 out of the 40 attendees (20%) represented the desire of professional and hobby mineral enthusiasts for continued open

access to public lands.

January and early February will also see the Santa Fe National Forest hold a dozen open house meetings where the public and concerned user groups can comment on the Final Draft of their Forest Plan Revision. Members of the AGMC and myself plan to attend many of these meetings to promote networking with other user groups with similar interests.

The first week of February has the National Forest Foundation holding two 'Recreational Partnership Summits' on behalf of the Carson National Forest. The Carson Forest Plan Revision Team seeks input from recreational users and groups at these venues. I plan to attend the 1<sup>st</sup> meeting along with the AGMC VP for Field Trips, and the 2nd meeting along with members of a newly forming Petaca District miner's group.

I would like to commend the foresight of Elaine Kohrman (Forest Supervisor for the Cibola Natl. Forest) for her desire to develop this new collaborative approach for generating user input to the Forest Plan. It shows a commitment to developing innovative methods of forest planning which are more inclusive and more sensitive to the needs of all forest users. Kudos also go out to the Carson Forest Plan Revision Team for reaching out through their Recreational Partnership Summits to users of the Carson Forest. Hopefully these innovators will start a trend where all National Forest management becomes a community effort and public land management becomes more closely aligned with the needs of all public land users.

Submitted by Mel Stairs

RMFMS PLAC Delegate (NM/wTX)

\*\*\*\*\*

## **Denver Club Does Good for Dinosaur Ridge**



By Kathy Honda, Colorado State Director

The Denver Gem and Mineral Guild put their mineral, rock, and fossil expertise to work this past fall, tackling what turned out to be an enormous job for Dinosaur Ridge, the local dinosaur track and bone site in Morrison, Colorado. Over the years, generous rock hounds had donated flats upon flats upon flats (hundreds) of minerals, rocks, and fossils to benefit the gift shop or used for classes and tour groups of school kids who visit the Ridge. The flats had accumulated in the various storage areas and were taking up valuable space. So the gift shop manager asked the Guild if they could sort through the specimens, clean, box, label and price them for sale. Certainly! What a great service project and a way to review mineral and rock identification! We thought it would take a month.

So we started in. Guild members spent one day a week from August through November mineralizing. Marj Becker went beyond the call of duty by folding over 5,000 little specimen boxes, gluing small specimens in the boxes, and double sticking labels in the boxes. Beth Simmons formatted and printed the labels. Linda Burns, Dave Sanchez, and Terri Harris labeled and stuck price tags on the specimens. Linda and Marj helped transport the flats of specimens back to the Ridge. And every time they took a load out, another stack of flats magically appeared.

In the end, the Guild returned to the Ridge over \$21,000 worth of marketable specimens (meaning the project members probably touched and handled many thousands of specimens, numerous times!) Marj Becker and Beth Simmons were honored by the Friends of Dinosaur Ridge as being the best friends of all! The organization awarded them "volunteer of the Year" plaques for 2016!





## **2017 Anthem Gem & Mineral Show**

**P.O. Box 74215  
Phoenix, AZ 85087**

**Anthem, AZ – January 26, 2017** – The 2017 Anthem Gem & Mineral Show, sponsored by the Daisy Mountain Rock & Mineral Club, will be held Saturday, March 25<sup>th</sup> from 9am to 5pm, and Sunday, March 26<sup>th</sup> from 9am to 4pm, at the Boulder Creek High School, located at 40404 N. Gavilan Peak Parkway in Anthem, AZ, easily accessible from the Daisy Mountain Dr. exit off I-17. Just follow the signs!

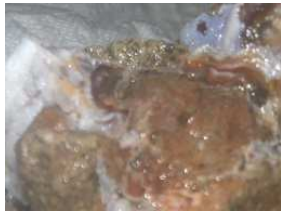
This year’s event promises to be the largest and most exciting show in North Phoenix with over 30 vendors, displaying a varied collection of gems, minerals, beads, lapidary work, jewelry, geodes, fossils and meteorites.

With a specialized Kid’s Corner providing a fun and educational experience, there is something for everyone! Adults are \$3, seniors and students are \$2, with children 12 and under free.

Find more information on our website [www.dmrmc.com](http://www.dmrmc.com), Meet Up and Facebook, or call Ed Winbourne at (978) 460-1528.

### **About Daisy Mountain Rock & Mineral Club**

We are a non-profit organization whose sole purpose is to promote and further an interest in geology, mineralogy and lapidary arts, through education, field experiences, public service and friendship.



\*\*\*\*\*

## **Rocky Mountain Federation of Mineralogical Societies** **Show and Convention**

Sponsored by the ***Albuquerque Gem & Mineral Club, Albuquerque, NM***  
**MAR 17-19, 2017; NM State Fair Grounds, Albuquerque, NM:**  
**For more information go to club website: [www.agmc.info/](http://www.agmc.info/)**



Educational Nonprofit

2702 E. Pikes Peak Ave. Colorado  
Springs, CO 80909  
www.rmfmts.org

RMFMS Distribution

The official publication of the Rocky Mountain Federation of Mineralogical Societies, Inc. The RMFMS is a regional member of the American Federation of Mineralogical Societies, Inc. and is issued monthly (except June and July). It is a privilege of membership of the RMFMS and cannot be exchanged by the editor for individual club newsletters from other regional federations. [www.rmfmts.org](http://www.rmfmts.org)